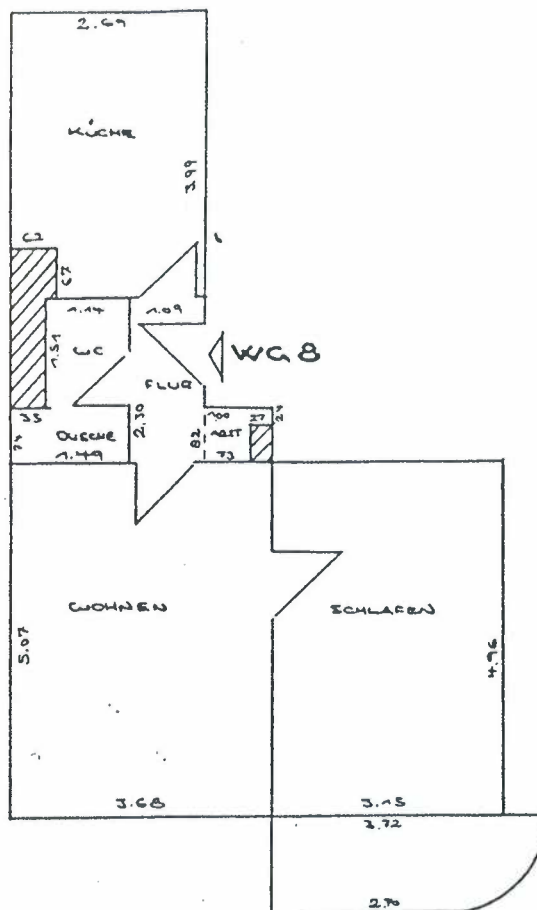


WOHNUNG 8



WOHNEN	5,07 x 3,68	=		18,66 ^c
SCHLAFEN	4,96 x 3,15	=		15,62 ^c
KÜCHE	2,69 x 3,99	=	10,73 [□]	
	- 0,62 x 0,67	=	0,42 [□]	10,31 ^c
WC - DUSCHE	1,14 x 1,51	=	1,72 [□]	
	+ 1,49 x 0,74	=	1,10 [□]	2,72 ^c
FLUR	2,30 x 1,09	=		2,51 ^c
ABSTELL	1,00 x 0,82	=	0,82 [□]	
	- 0,58 x 0,27	=	0,16 [□]	0,66 ^c
LOGGIA	2,71 x 1,37	=	3,71 [□]	
	+ $\frac{1,00 + 1,37}{2} = 1,18^S$	=		
	$\frac{1,18^S \times 1,18^S \times 3,14}{4}$	=	$\frac{1,10^{\square 1/4}}{4}$	$\frac{1,20^{\square}}{4}$
				51,68 [□]